

# The DHIN Dialogue

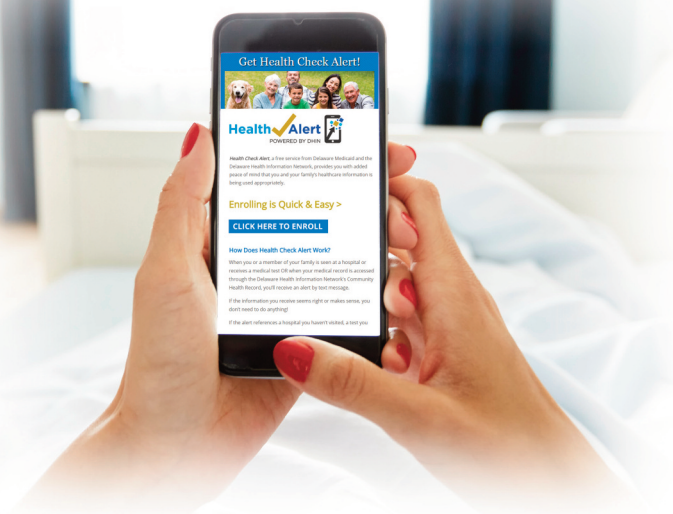
## June 2017

A Newsletter from the Delaware Health Information Network



## Your Information, at Your Fingertips

### *DHIN Pilots Personal Health Record*



Patients at **Delaware Heart & Vascular**, **Newark Urgent Care** and **Union Hospital** have a new option for a personal health record, as each facility will be piloting DHIN's Health Check Connect product with interested patients.

The free product, developed with funding from the Office of the National Coordinator for Health Information Technology, helps consumers access the same information that their medical caregivers see. Patient information reported into DHIN's Community Health Record – test results, care summaries and imaging studies, for example – will be made available through a secure portal for a patient to see and to add to with prescription information, vital statistics and data from personal health trackers.

This interactive tool can help patients chart their progress towards reaching health goals, allow for the secure exchange of messages with healthcare providers and provide a dashboard for at-a-glance health profiles.

To learn more about DHIN's consumer engagement efforts, visit [www.DHIN24seven.org](http://www.DHIN24seven.org).

#### **A Note About DHIN's Consumer Products**

The patient-physician relationship is sacred, and DHIN encourages consumers to discuss their medical records, health histories and any healthcare concerns they may have with their providers. Our Health Check products promote information transparency and convenience and are designed to complement the tools and resources providers make available to their patients.

## By the Numbers



**16,147** Visits to [dhin.org](http://dhin.org) in May

**889** Healthcare organizations enrolled in DHIN

**354** Delaware practices with a DHIN-certified electronic medical record.

**18** Southern New Jersey providers currently submitting Delaware patient data to the Community Health Record for event notification purposes.



## Reminder to Practices Receiving Faxes Results from Bayhealth

Bayhealth and DHIN have recently reconciled their records to identify practices signed off with DHIN, but still receiving faxed results from Bayhealth. Per an earlier communication to those practices, faxed results will be discontinued within a one-week period. **STAT results, however, will still be called or faxed.**

Please contact your DHIN Relationship Manager or Bayhealth Provider Analyst Cathy Diven at [SER@bayhealth.org](mailto:SER@bayhealth.org) with any questions.

## DHIN and the Future of Health Privacy



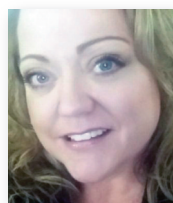
Do patients have an interest in health information exchanges? That was the question DHIN Chief Operating Officer **Randy Farmer** tackled at the 7th International Summit on the Future of Health Privacy, held earlier this month at Georgetown University School of Law. Read more at [dhin.org](http://dhin.org).

## Accessing Care Summaries

### LOGIN

With over 1,000,000 care summaries from over 100 practices and 400 providers, there is a good chance you have a patient with a care summary in the Community Health Record (CHR). Just click on the Documents Tab when you access your patient's information in the CHR. Check out this [short tutorial](#), and, if you have questions or need more information, please contact your DHIN Relationship Manager.

## Latest Additions to the DHIN Roster



After several months contracting with DHIN, **Angie Kaiser** has joined the team full-time, and we couldn't be happier! An MSN prepared registered nurse skilled in Informatics, Angie previously consulted with healthcare organizations in the area of Meaningful Use, MACRA and clinical analytics. She is also adjunct faculty at Millikin University in Illinois, teaching Informatics for Healthcare Improvement to graduate nursing students.

As DHIN's Clinical Informaticist, Angie will head up DHIN's efforts in the increasingly important area of data analytics. Welcome, "officially," to the team, Angie!



We're also pleased to announce that **Sam Adarsh** has joined DHIN as an HIE Integrations Analyst. In addition to his experience with healthcare IT standards and EMRs, Sam is a graduate of Wilmington University with a Master's in Information Systems Security. Welcome, Sam!

## Getting in Touch: DHIN Relationship Managers

### Ed Seaton

New Castle County practices  
[ed.seaton@dhin.org](mailto:ed.seaton@dhin.org)

### Garrett Murawski

Kent County and Bayhealth practices  
[garrett.murawski@dhin.org](mailto:garrett.murawski@dhin.org)

### Michael MacDonald

Sussex County, PRMC, Atlantic General Hospital and Beebe Healthcare practices  
[michael.macdonald@dhin.org](mailto:michael.macdonald@dhin.org)

### Jamie Locke

St. Francis, Union Hospital and Nemours practices  
[jamie.locke@dhin.org](mailto:jamie.locke@dhin.org)

### Lakeisha Moore

Christiana Care practices  
[lakeisha.moore@dhin.org](mailto:lakeisha.moore@dhin.org)

## Tech Tips

For answers to commonly asked questions or technical problems, be sure to visit our [Tech Tips](#) page on the DHIN website, under Resources. Included are links to commonly viewed instructional videos, which may help you solve occasional Community Health Record challenges. As always, please feel free to call our Help Desk during business hours at (302) 480-1770.

## Staying Social

Like. Follow. Tweet. Share. **Connect with DHIN.**



Like our enrollment numbers, DHIN's social media presence is growing! In fact, we aren't aware of another HIE with as much of a following on Facebook - thanks to all those who have "liked" us! **5,000+ followers and growing!**